

Volts-1000 DC Amps-5A Electric Vehicle Auxiliary Fuses

10CT10 Series



Features

- General purpose fuse for EV/HEV
- Compact bolt down and thru-hole, optional for other installation
- Excellent DC performance
- 1000Vdc ideal for EV or HEV application
- Design refer to JASO D622:2006
- Comply RoHS directive



Electrical Characteristics

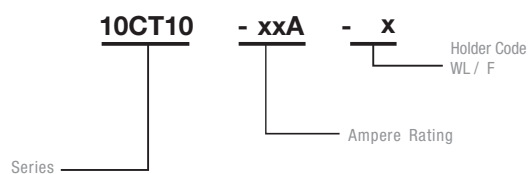
Amp Rating	% of Amp Rating	Opening Time
5A	100%	$\geq 14400\text{sec}$
	300%	0.1~15sec

Specification

Part Number	Rated Current (A)	Rated Voltage/ Interrupting rating	I^2t (A ² S) Melting Pre-arc	Typical Voltage Drop (mV)
10CT10-5A-x	5	1000Vdc/50000A	35	200

- Temperature Rise : $\leq 50\text{K}$ with 70% of rated current
- Typical pre-arcing I^2t measured at $10I_n$
- "-x", Holder Code

Part Numbering System



Volts-1000VDC Amps-5A

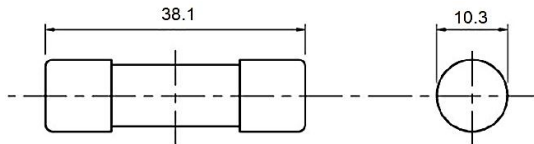
Electric Vehicle Auxiliary Fuses

10CT10 Series

Dimension

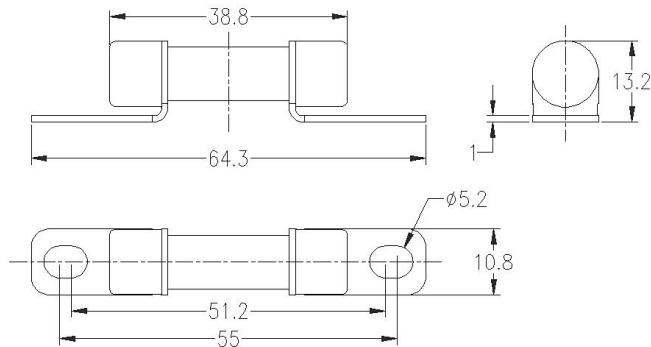
Unit: mm

10CT10-5A

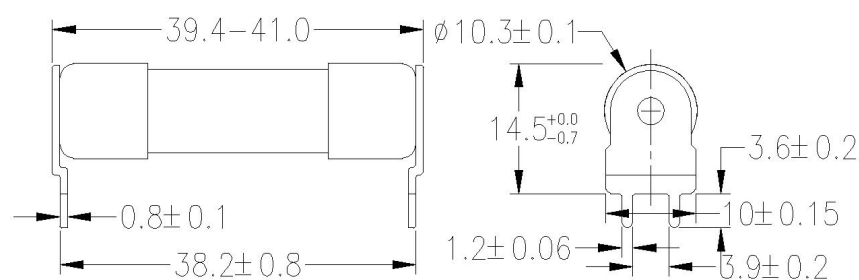


10CT10-5A-WL

Note: recommend tightening torque is 4.5+/-1.0Nm;



10CT10-5A-F



Recommend Drilling Pattern for F holder



Soldering Parameter:

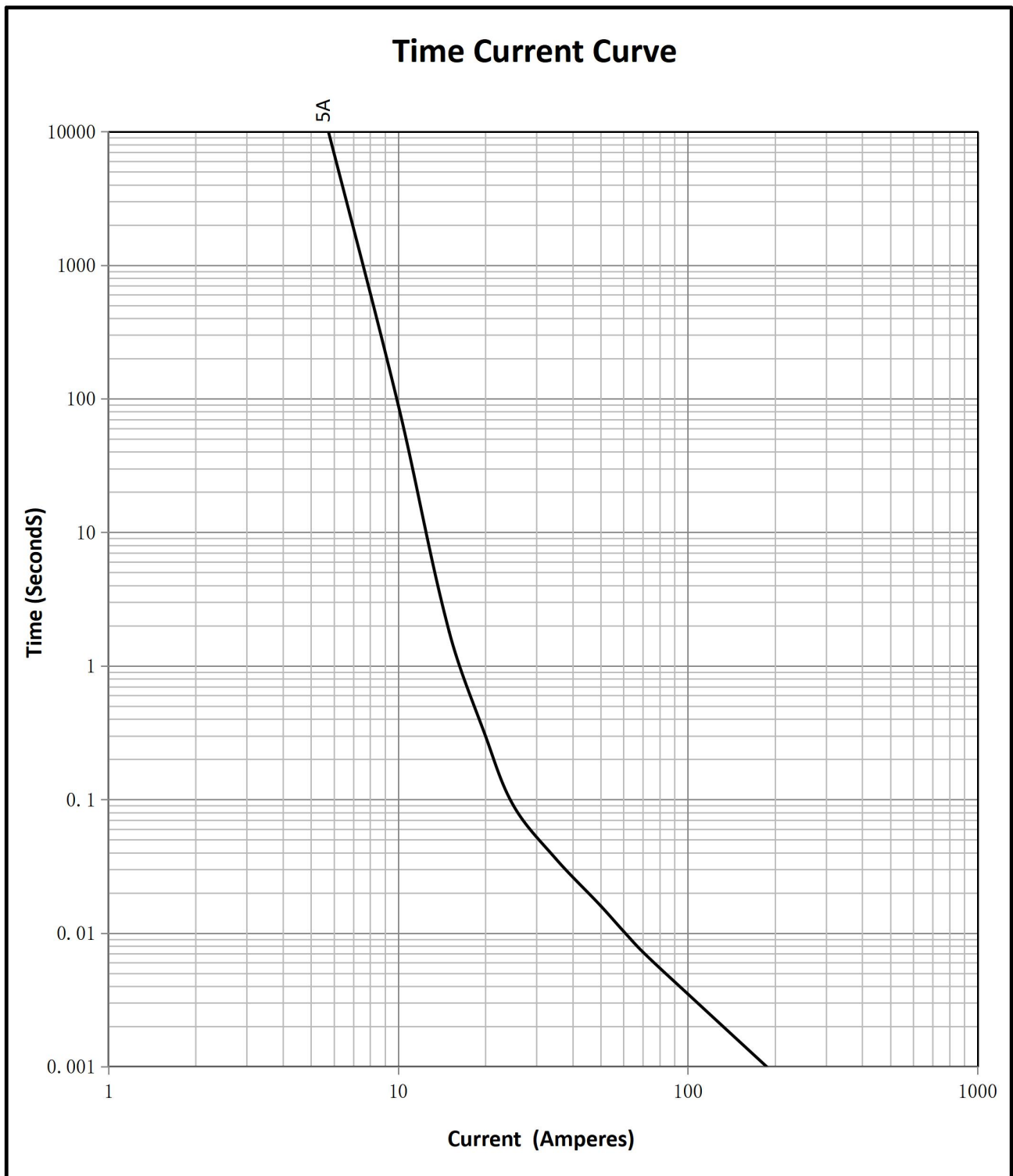
- Wave soldering:
Solder Pot Temperature: 260°C Max.
Solder Dwell Time: 10s Max.
- Hand-Soldering (not recommended):
Solder Iron Temperature: 350°C+/- 5°C
Heating Time: 5s Max.

Volts-1000VDC Amps-5A

Electric Vehicle Auxiliary Fuses

10CT10 Series

Average Time Current Curves



** For Short circuit protection only, the Minimum BC is 3.0In

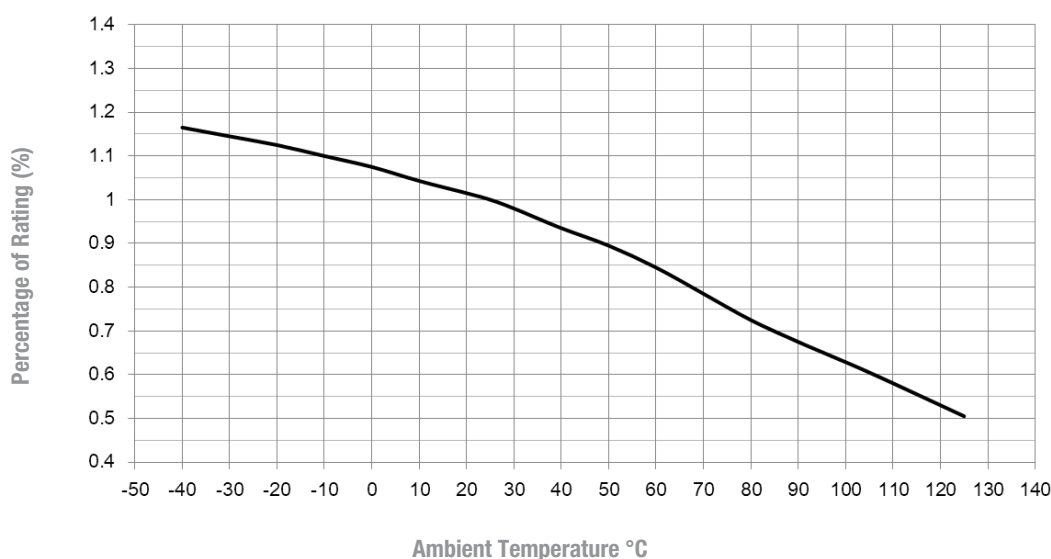
Volts-1000VDC Amps-5A

Electric Vehicle Auxiliary Fuses

10CT10 Series

Temperature Derating Curve

Operating Temperature: -40°C to +125°C, with proper derating factor applied.



Transportation and Storage

During transportation and storage, should avoid water seepage and mechanical damage.

Conditions for operation in service

Where the following conditions apply, fuses complying with this standard are deemed capable of operating satisfactorily without further qualification.

If the operating conditions exceed the following requirements, please contact manufacturer.

- Normal temperature: -5°C to 40°C;
- The altitude of the site of installation of the fuses does not exceed 2 000 m above sea level;
- The air is clean and its relative humidity does not exceed 50% at the maximum temperature of 40°C;
- Higher relative humidities are permitted at lower temperatures, e.g. 90 % at 20°C;
- Under these conditions, moderate condensation may occasionally occur due to variation in temperature.

Vibration

Meet JASO D622:2006 Section 6.3.3 Vibration durability test requirement, can be use on Electrical Vehicle application;