

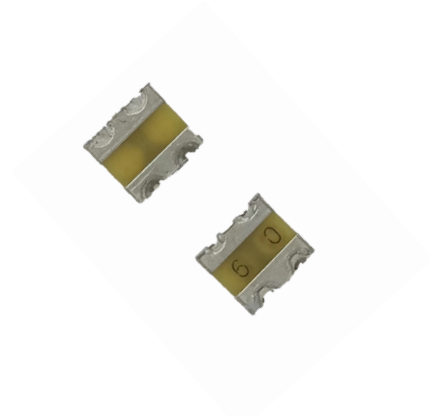
Fast Acting | 0.126x0.142 inch Surface Mount Fuse

1214FA-W Series

1214FA-W Series are wire-in-air surface mount fuse. The maximum breaking voltage is 24V and maximum breaking current is 300A. The product size is small, especially the height direction is only 1.1mm, which can meet the design of limited space.

Features

- High reliability
- Structural stable I^2T , strong surge resistance
- Sealing structure, strong resistance to harsh environment
- Wire-in-air design, safe breaking, no sparks;



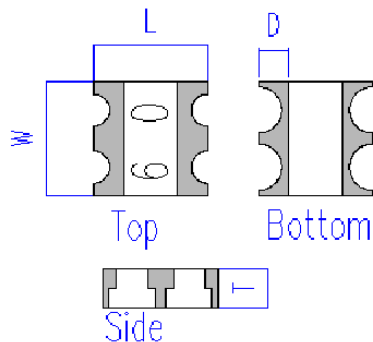
Electrical Characteristics

Amp Rating	% of Amp Rating	Opening Time
40~60A	100%	4 Hours Min.
	200%	30 Seconds Max.

Specifications

Part Number	Ampere Rating (A)	Voltage Rating	Interrupting Rating	Typical Cold Resistance (mOhms)	Normal I^2t (A ² Sec)	Marking Code
1214FA-40A-W	40	24VDC @ 300A		0.920	282	40
1214FA-50A-W	50			0.780	330	50
1214FA-60A-W	60			0.680	530	60

Dimension Unit: mm



Packaging

- Quantity: 2000pcs
- 8mm wide tape on 178mm(7 inch) diameter reel -specification EIA Standard 481.

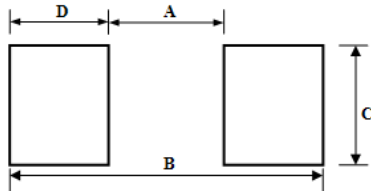
Type	L	W	T	D
1214FA-W	3.2±0.2	3.6±0.2	1.1±0.2	0.85±0.35

Fast Acting | 0.126x0.142 inch

Surface Mount Fuse

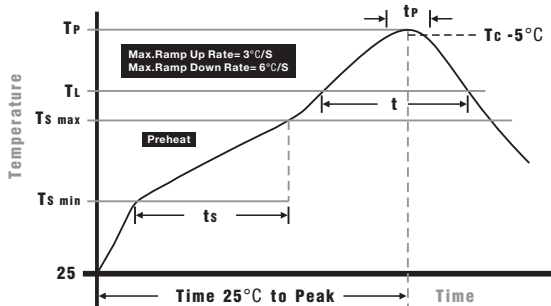
1214FA-W Series

Recommended Land Patterns Unit: mm



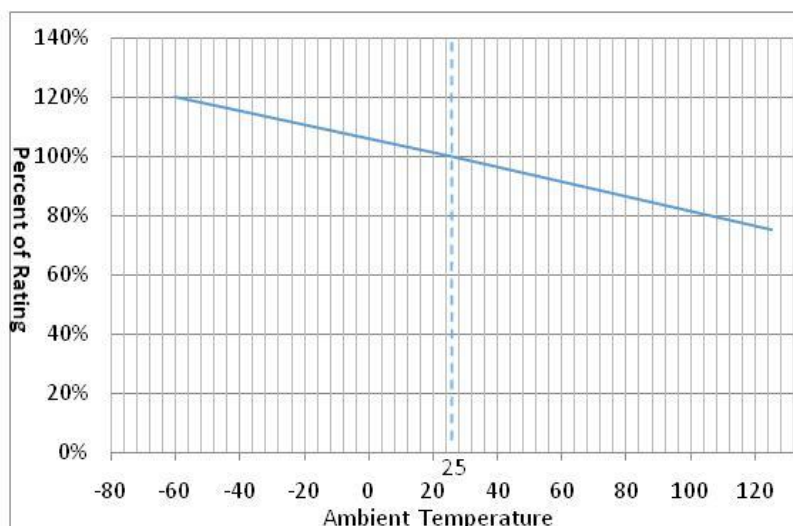
Type	A	B	C	D
1214FA	1.5	4.4	5.4	1.45

Soldering Parameters



Reflow Condition		Pb – Free assembly
Pre heat	- Temperature Mi (Ts(min))	150°C
	- Temperature Ma (Ts(max))	200°C
	- Time (Min to Max) (ts)	60 – 120 secs
Average ramp up rate (Liquidus Temp (TL) to peak)		3°C/second max
TS(max) to TL - Ramp-up Rate		3°C/second max
Reflow	- Temperature (TL (Liquidus))	217°C
	- Temperature (tL)	60 – 150 seconds
Peak Temperature (TP)		260°C
Time within 5°C of actual peak Temperature (tp)		20 seconds
Ramp-down Rate		6°C/second max
Time 25°C to peak Temperature (TP)		8 minutes Max.

Temperature Derating Curve



Fast Acting | 0.126x0.142 inch

Surface Mount Fuse

1214FA-W Series

Average Time Current Curves

