

1000Vdc Square Body Fuse

E10SD Series

Fast Acting Fuse



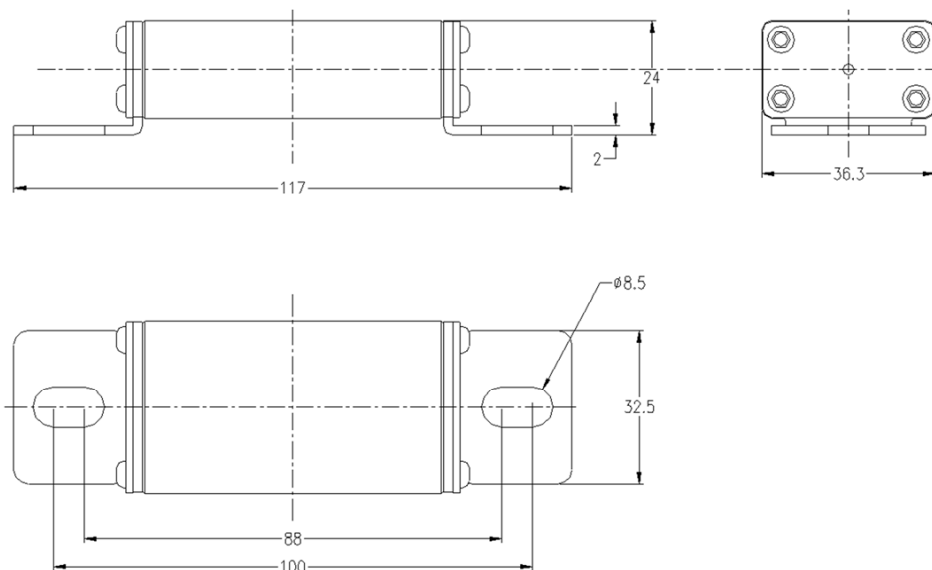
Features

- Fast Acting fuse for DC Application
- Stud-mount, optional for other installation
- Excellent DC performance
- Design to UL248-1 & UL248-20
- Comply RoHS directive

Specifications

Part Number	Rated Current (A)	Rated Voltage (Vdc)	Breaking Capacity (A)	Power Loss At 0.5In (W)
E10SD-150A-TA	150	1000	50000	4.5
E10SD-200A-TA	200	1000	50000	6.6
E10SD-250A-TA	250	1000	50000	8.5

Dimension (mm)



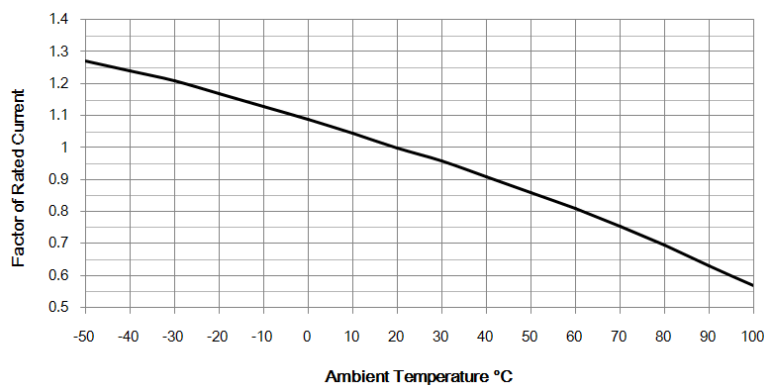
Note: 12+/- 1Nm (M8)

1000Vdc Square Body Fuse

Fast Acting Fuse

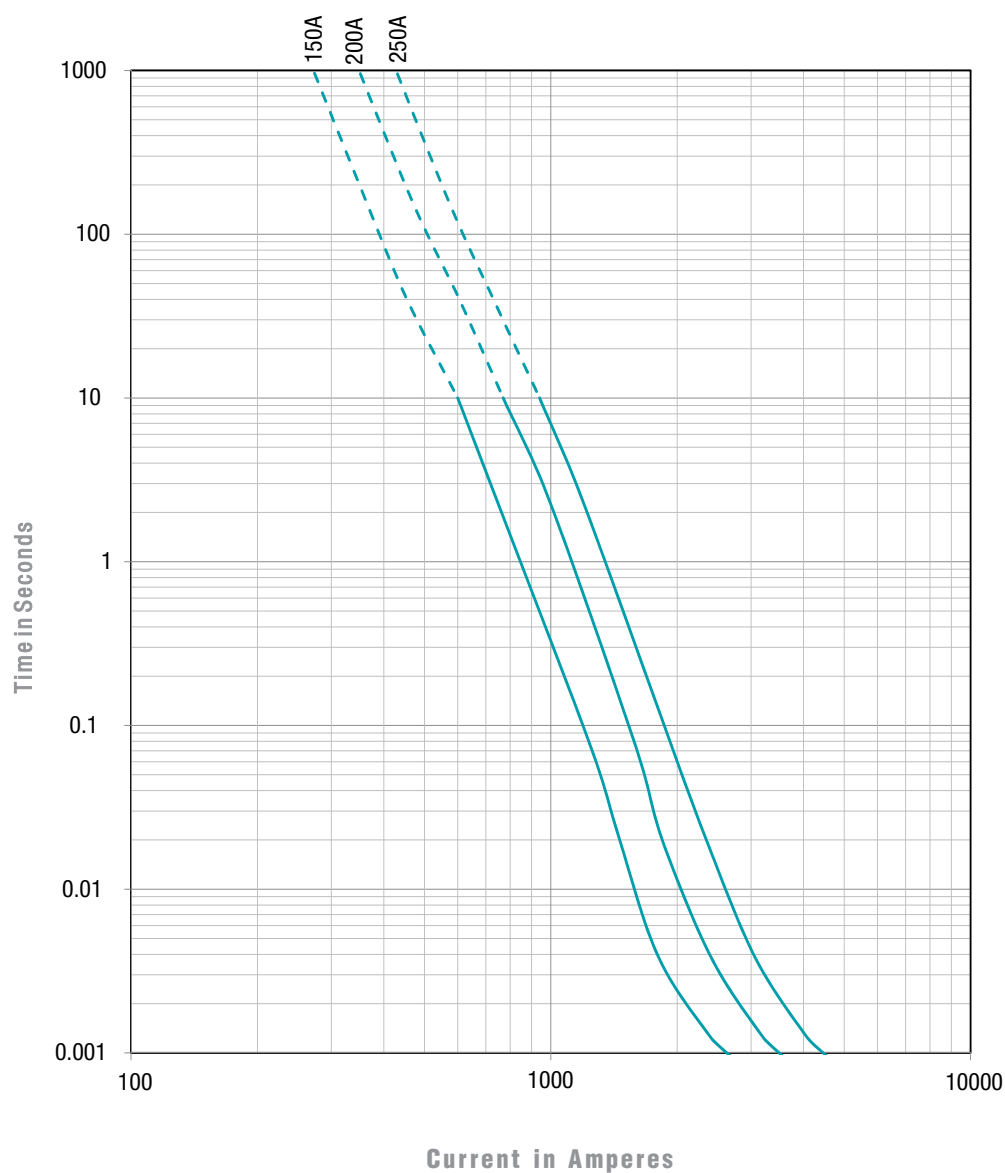
E10SD Series

Temperature Re-Rating Curve



Operating Temperature: -40°C to +100°C, with proper rerating factor applied.

Time-Current Curve



1000Vdc Square Body Fuse

Fast Acting Fuse

E10SD Series

Transportation and Storage

During transportation and storage, should avoid water seepage and mechanical damage.

Conditions for operation in service

Where the following conditions apply, fuses complying with this standard are deemed capable of operating satisfactorily without further qualification;

Normal temperature: -5°C to 40°C ;

The altitude of the site of installation of the fuses does not exceed 2 000 m above sea level;

The air is clean and its relative humidity does not exceed 50 % at the maximum temperature of 40°C ;

Higher relative humidities are permitted at lower temperatures, e.g. 90 % at 20°C ;

Under these conditions, moderate condensation may occasionally occur due to variation in temperature.

For operation condition other than above, please contact manufacturer.

Vibration

Meet JASO D622:2006 Section 6.3.3 Vibration durability test requirement, can be use on Electrical Vehicle application.